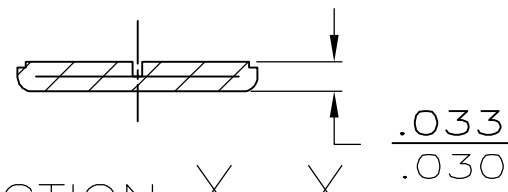
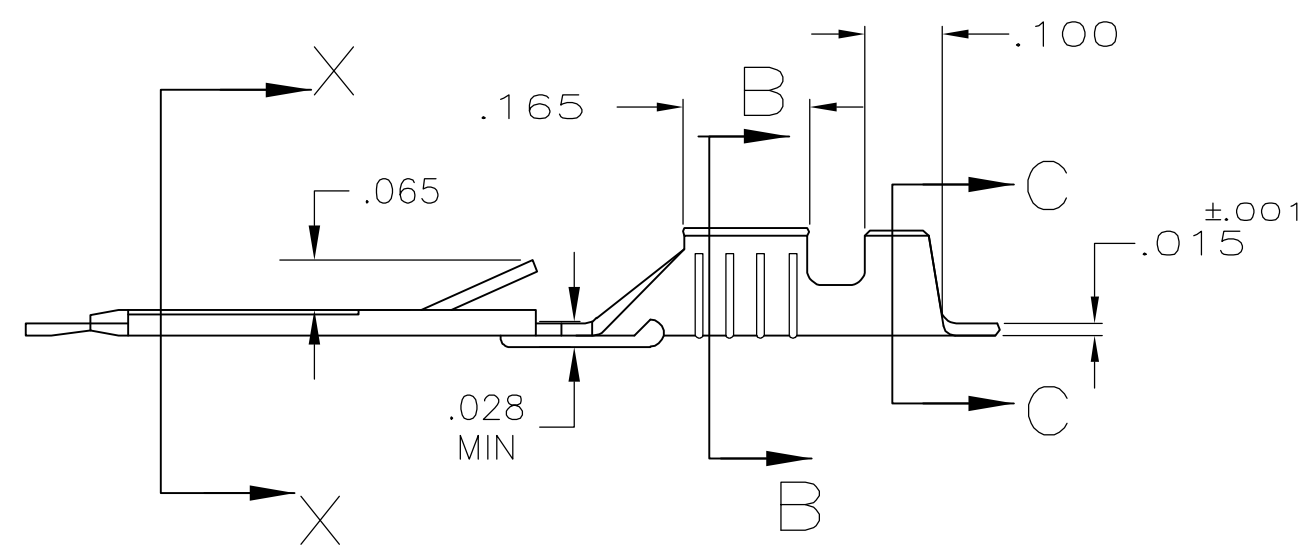
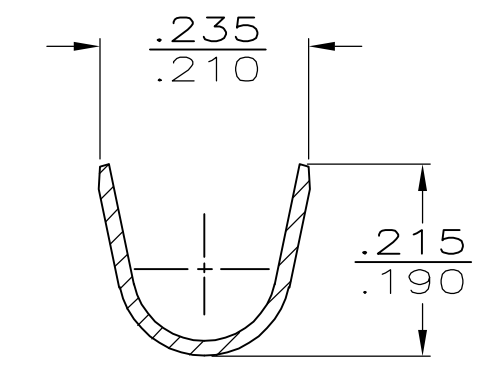
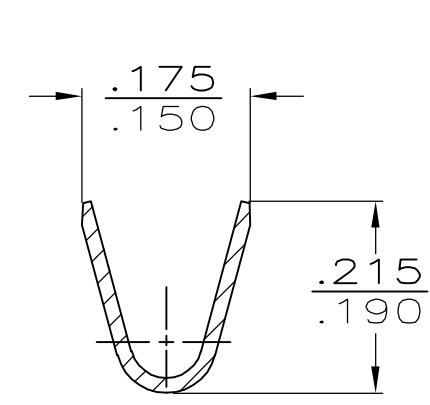
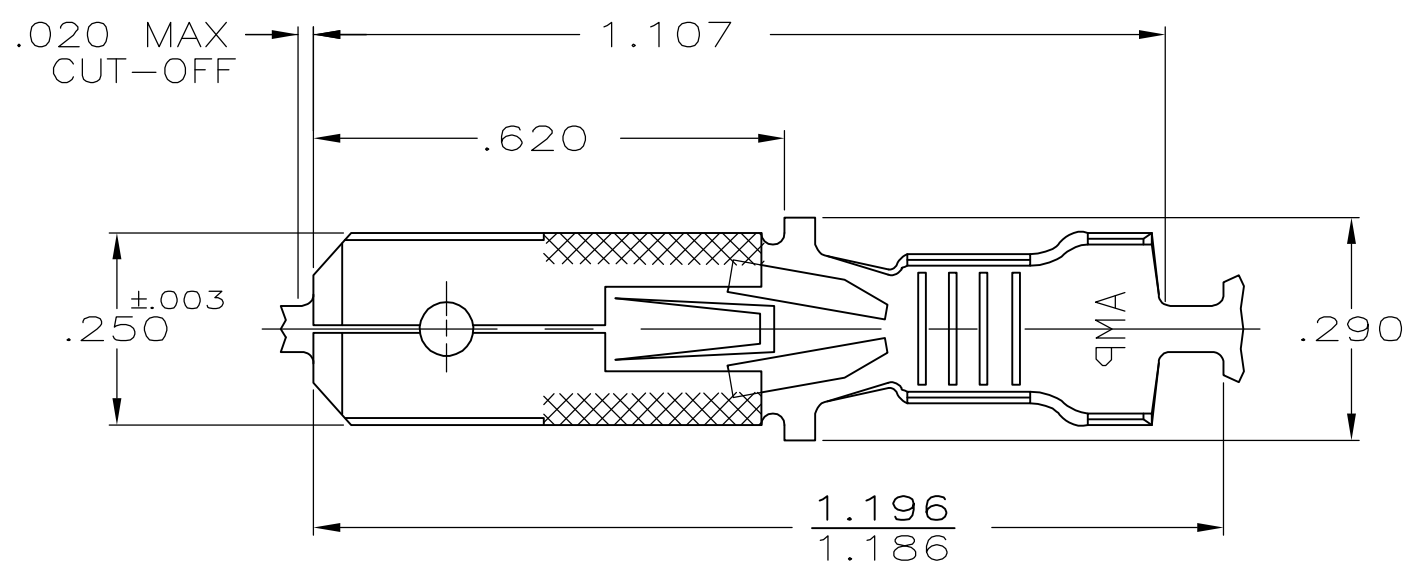


THIS DRAWING IS UNPUBLISHED. RELEASED FOR PUBLICATION  
 © COPYRIGHT BY TYCO ELECTRONICS CORPORATION. ALL RIGHTS RESERVED.

| LOC | DIST | REVISIONS   |                       |         |       |
|-----|------|-------------|-----------------------|---------|-------|
| P   | LTR  | DESCRIPTION | DATE                  | DWN     | APVD  |
| AF  | 50   | U           | REV PER ECR 05-017609 | 27MAR06 | JR KR |



- 1 CONTINUOUS STRIP ON REELS
- 2 WIRE SIZE IS #14-#10 AWG
- 3 INSULATION RANGE IS .120-.170 DIA
- 4 FOREIGN PRODUCTION ONLY
- 5 .000080 MIN TIN OVER .000100 MIN COPPER UNDERPLATE OR OPTIONAL .000050 MIN NICKEL UNDERPLATE.
- 6 PRELIMINARY - NOT FOR PRODUCTION



|          |                 |   |         |
|----------|-----------------|---|---------|
| OBSOLETE | 5               | 6 | 60701-4 |
|          | PRE-TIN         | 4 | 60701-3 |
|          | -               | 6 | 60701-2 |
|          | TIN .000080 MIN |   | 60701-1 |
|          | FINISH          |   | PART NO |

|  |           |                  |             |                                 |   |            |         |
|--|-----------|------------------|-------------|---------------------------------|---|------------|---------|
| THIS DRAWING IS A CONTROLLED DOCUMENT. |           | DWN              | JR RUTH     | 1/31/91                         | Tyco Electronics Corporation<br>Harrisburg, Pa 17105-3608 |            |         |
| DIMENSIONS: INCHES                     |           | CHK              | MS FEHER    | 1/31/91                         |   |            |         |
| TOLERANCES UNLESS OTHERWISE SPECIFIED: |           | APVD             | J GILLESPIE | 1/31/91                         | NAME  |            |         |
| 0 PLC ± -                              |           | PRODUCT SPEC     |             | TAB, FASTIN-FASTON, .250 SERIES |   |            |         |
| 1 PLC ± -                              |           | APPLICATION SPEC |             | -                               |   |            |         |
| 2 PLC ± -                              |           | SIZE             | A3          | CAGE CODE                       | 00779   | DRAWING NO | C-60701 |
| 3 PLC ± .015                           |           | WEIGHT           | -           | RESTRICTED TO                   |   | -          |         |
| 4 PLC ± -                              |           | CUSTOMER DRAWING |             |                                 |   |            |         |
| ANGLES ± -                             |           | SCALE            | 4:1         | SHEET                           | 1 OF 1  | REV        | U       |
| MATERIAL                               | #2H BRASS | FINISH           | SEE TABLE   |                                 |   |            |         |